



Volleyball FALL



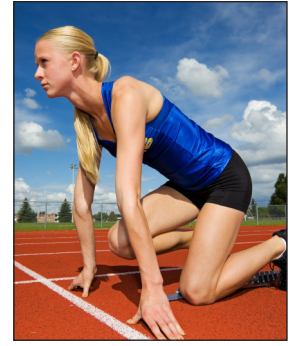
Flag Football FALL



Basketball WINTER



Soccer SPRING



Track SPRING

Middle School Sports

Thank you for your interest in participating in Middle School Sports, a partnership of Willamalane Park and Recreation District and Springfield Public Schools.

Registration begins during middle school class registration in the fall.

- Each sports fee is \$60 (unless otherwise noted)
- Scholarships are available
- Transportation is provided by Springfield Public Schools

In order to be eligible, each participant is required to turn in:

- Registration/scholarship form with payment**
- Annual medical history form**
- Springfield Public Schools liability notice**
- A current pre-participation examination (physical)**

Sports physicals are required prior to participating. Physicals are valid for two years. Please see your school nurse for information about obtaining a current physical.

Pick up a registration packet at school registration in the fall, or online at willamalane.org.

Questions? Contact:

Jeanette Jacobson, Middle School Sports coordinator
541-736-4516
jeanettej@willamalane.org

